

XClampR® Bidirectional Flat Clamping TVS
in SMD DO-218AC Package

Commercial-Grade and AEC-Q101 Qualified Devices Deliver Low Clamping Voltage, High Power Density

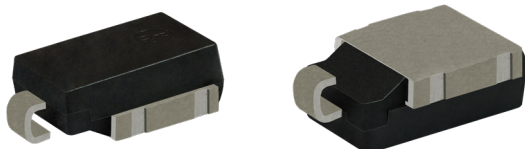


ADVANTAGE

Feature clamping ratio near 1.0, stand-off voltages from 33 V to 85 V, and peak pulse power dissipation of 11 kW at 10/1000 μ s

KEY PRODUCT FEATURES

- ✓ Breakdown voltages: 36.7 V to 104 V
- ✓ Maximum clamping voltage: 40.6 V to 104.0 V
- ✓ Peak pulse current: at 10/1000 μ s: 80.5 A to 207.1 A, at 8/20 μ s: 887 A to 2140 A
- ✓ Maximum leakage current at stand-off voltage: 10 μ A
- ✓ Operating temperature range: -55 °C to +175 °C
- ✓ Matte tin-plated leads are solderable per J-STD-002 and JESD 22-B102



MARKETS AND APPLICATIONS



CONNECTIVITY

- Telecom mobile and fixed infrastructure
- Telecom devices



CONSUMER

- Entertainment



MOBILITY

- Automotive
- Electrification (e-powertrain)
- Intelligence (smart vehicle)
- Fuel cell transmission



ENERGY SECTOR

- Storage



INDUSTRIAL

- Automation and infrastructure
- Drives and tools



COMPUTER

- Computer



AMS

- Military

RESOURCES



Order Samples



Product Page



Contact Us
Diodes Americas



Contact Us
Diodes Asia



Contact Us
Diodes Europe



Did You
Know



VLMx1700 - 0201 ChipLEDs in Seven Colors